



Stanford Cycling



Christopher Castro Memorial Team Time Trial

Paicines, CA

April 21st, 2007

Registration opens at 7:30 a.m.

USCF Permit #2007-822



Category	Start Time	Distance	Places
MA	9:00 a.m.	12.2 miles (19.6 km)	10
MB	To follow	12.2 miles (19.6 km)	8
MC	To follow	12.2 miles (19.6 km)	5
WA	9:30 a.m.	12.2 miles (19.6 km)	10
WB	To follow	12.2 miles (19.6 km)	8

Registration opens at 7:30 a.m. and closes 15 minutes before the start of the event (8:45 a.m.). Teams will be sent off by category. One minute between teams. Entry fee is \$15/team. The course is a beautiful out-and-back on Panoche Valley Road in Paicines, CA. Start/finish is just beyond the winery; turnaround is just past the bridge 6 miles out. See map and elevation profile below. USE THE PORTA-POTTIES. The police will notice if you don't.

Chris Hooyman Memorial Individual Time Trial

Paicines, CA

April 21st, 2007

Registration opens after TTT

USCF Permit #2007-822



Category	Start Time	Distance	Places
MA	12:00 p.m.	12.2 miles (19.6 km)	20
MB	To follow	12.2 miles (19.6 km)	15
MC	To follow	12.2 miles (19.6 km)	12
WA	To follow	12.2 miles (19.6 km)	20
WB	To follow	12.2 miles (19.6 km)	15

Registration opens when TTT concludes and closes at 11:45 a.m. Same course as the TTT. \$15 per rider. Riders will be sent off by category; one minute. First MA rider off at 12 p.m.

Directions to Time Trial Course

Parking, registration, and start/finish at the Blossom Hill Winery, 385 Panoche Rd, Paicines CA 95043.

From the Bay Area / 101 South: Take the CA-25 exit, continue through Hollister to Paicines. Turn L on Panoche Rd, parking on L.

From SLO / 101 North: Exit at 1st St in King City. Bear R off ramp, then straight until 1st St becomes Bitterwater Rd (Route G13). Follow Bitterwater for 15 miles until it intersects CA-25. Turn left on CA-25 and continue 32 miles to Paicines. Turn L on Panoche Rd, parking on L.

From LA / 5 North: Exit on Panoche Rd (exit #368). Go L under the highway onto Panoche Rd. Stay on Panoche Rd 46 miles to Paicines.

Event Contact: Elliot Holland, stanfordTT@gmail.com, 650-400-9885



John Schlesinger Memorial Criterium

Santa Clara, CA

April 22nd, 2007

Registration opens at 8:30 a.m.

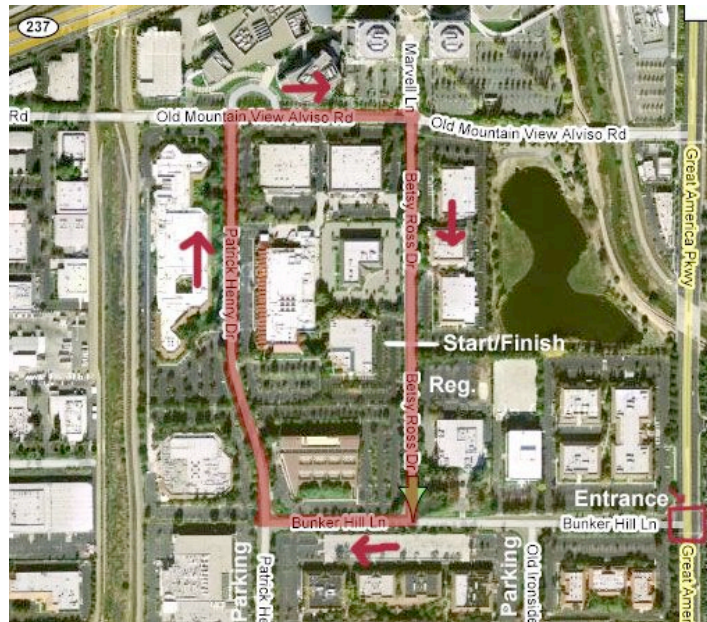
USCF Permit #2007-823

Category	Start Time	Laps	Distance	Places	Primes	Field Limit
MC	10:00 a.m.	20	16 miles	12	3	60
WB	10:45 a.m.	20	16 miles	15	4	60
MB	11:30 a.m.	25	20 miles	15	4	70
WA	12:30 p.m.	25	20 miles	20	6	70
MA	1:30 p.m.	35	28 miles	20	6	90

Directions to Crit Course

From 237, take Great America Parkway south and turn right on Bunker Hill Lane. From 101, take Great America Parkway north and turn left on Bunker Hill Lane. Street parking or look for lot parking instructions. For online maps, use Bunker Hill Ln and Betsy Ross Dr, Santa Clara, CA 95054.

The course is a flat four-corner rectangle, 0.9 miles long, on good pavement. Each turn is a 90-degree right-hander. Entry fee is \$15 per race. Registration opens at 8:30 a.m. and closes 15 minutes before the start of each event. There is no water at the race site, and all nearby buildings will be locked and patrolled by security. DO NOT ENTER PRIVATE PROPERTY. Use the porta-potties on site.



Event Contact: Evan Pickett, pickett@stanford.edu, 650-521-3091

Time Trial Course

